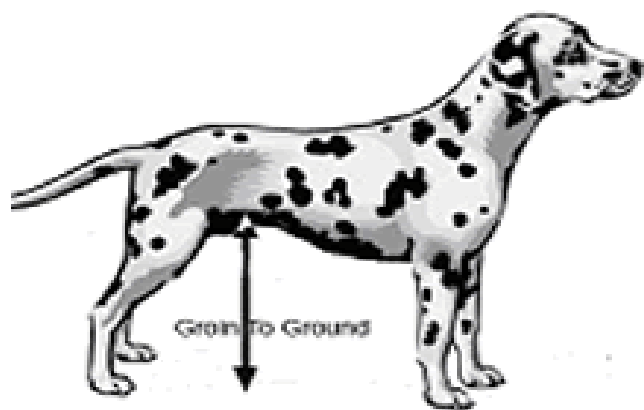




## Measuring your dog for a set of Walkin' Wheels

We only need your dog's weight, breed and one height measurement.

1. With your dog supported in their correct standing position, spine parallel to the ground, measure from the ground to the groin. This is the fold in the flank of the dog, the web like skin that joins the back leg to the abdomen (look at the skin between your thumb and forefinger).



If your pet is unable to stand, measure as shown below. Do not straighten your pet's leg. Leave the natural curve.






**\*Note:** If your pet is overweight, then the fold of flank will probably hang down, making the fold of flank measurement shorter than it really is. You will need to try and move the flank up to a normal position, to get an accurate measurement. The picture of the Boxer shows a normal fold of flank for a dog that is not overweight.

If you are unsure about how to measure, please call us (0800 072 3697) and we will be happy to help you.

**All you need to do is take the measurement and ask for a quote**



## How to Measure your small pet for a Walkin' Wheels® Mini frame wheelchair

Step 1: Width	Step 2: Fold of Flank	Step 3: Length
		
<p>Simply measure across the front of your dog's chest.</p>	<p>The Fold of the Flank (FOF) is a thin piece of skin that connects the dog's upper rear leg to his body.</p>	<p>Start from the back of the front leg and measure across to the back of the rear leg.</p>

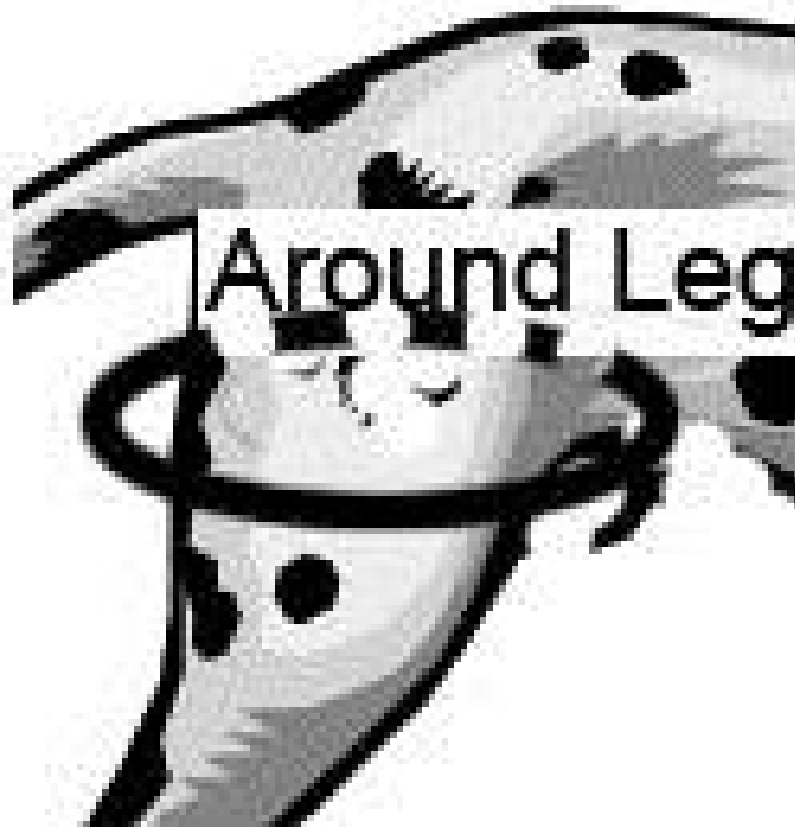
**Note:** An adjustment to the dog wheelchair, requiring a Philips screwdriver, is required for dogs over 6 inches high.

**Because of its unique design and compact size, the [Mini Walkin Wheels](#) is easy to transport. It does not fold or come with a Tote Bag (only the regular cart is designed to fold and has the tote bag to carry it around.)**



## How to Measure your pet for a harness

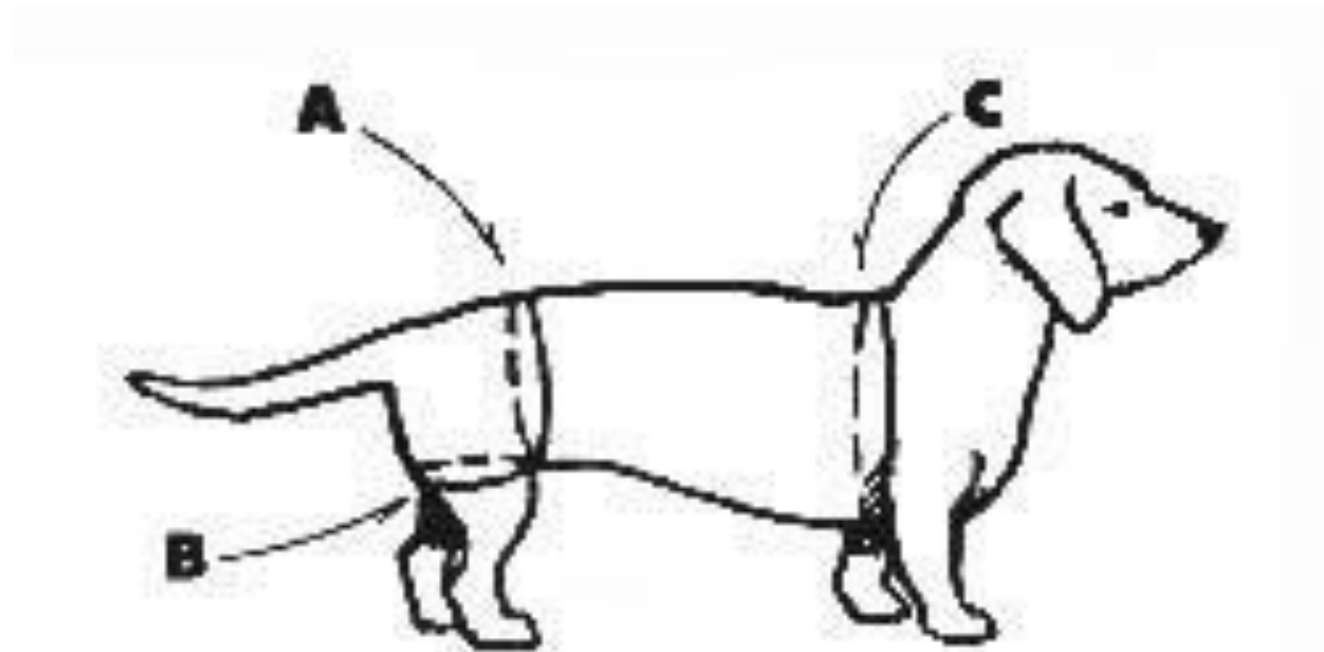
### Walkin' Lift® Harness



Measure around the circumference of your  
pets back leg at the fattest part of the thigh



## Walkin' Lift Combo Harness



**A and B** are needed for a Rear harness

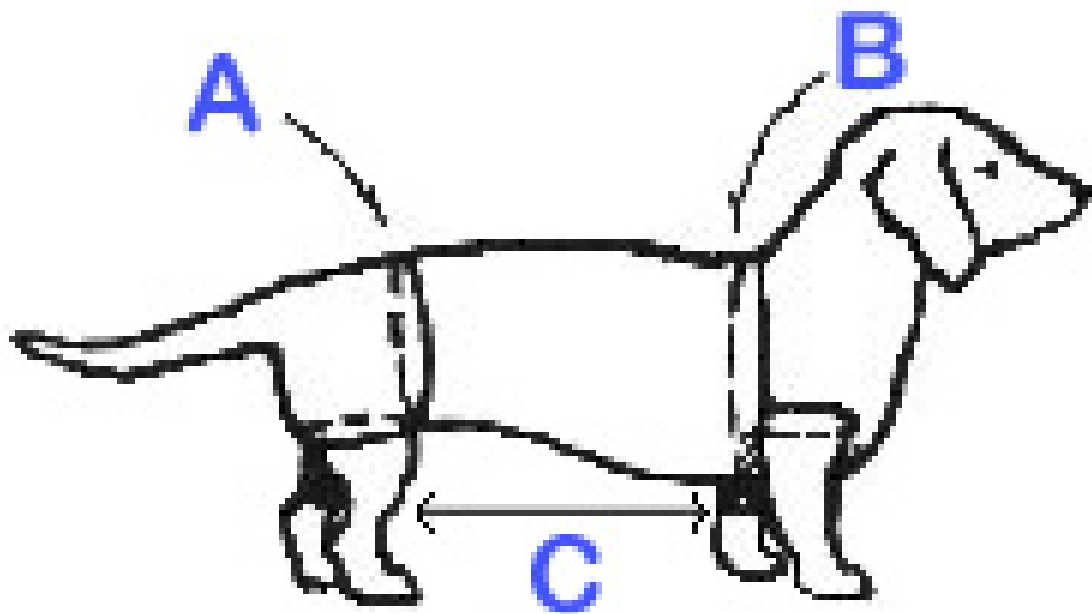
**C** for a Front harness.

If you are unsure about how to measure, please call us (0800 072 3697) and we will be happy to help you.



## How to Measure your pet for a Walkin' Support Sling

Measure right around the dog's body at either A or B, we need the larger of the dog's abdomen or chest. C is the distance between the dog's front and rear legs. It also helps if we know the dog's breed.



**Never** suspend a dog in the air from the Walkin' Support Sling. If you have to fully carry a dog that cannot support any weight on its legs, pick him up and cradle him or use a pet transport stretcher.

If you are unsure about how to measure, please call us (0800 072 3697) and we will be happy to help you.



## How to Measure your pet for Boots

Measuring for our Walkin' Wheels® boots, Durable and Rugged Boots could not be simpler.

**Walkin' Wheels® Boots, Walkin' Wheels® Durable and Rugged Boots and Ruffwear® boots**



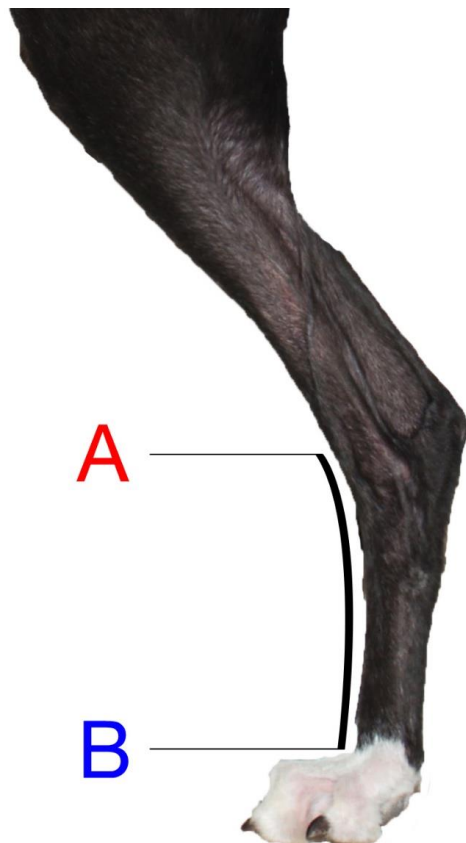
Place the foot on a piece of paper and press down on the top of the foot, mimicking how the foot spreads when the dog's walking.

Mark the left and the right side of the foot on the paper and measure the distance between

If you are unsure about how to measure, please call us (0800 072 3697) and we will be happy to help you.



## How to Measure your pet for No-Knuckling Training Socks



Measure from Point **A** to Point **B** on your dog, while they are standing, to determine which size No-Knuckling Training Sock will best fit your pet.

**Point A:** is located at the centre of hock joint.

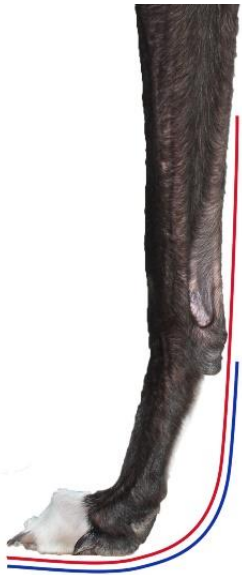
**Point B:** is located on top of the paw.





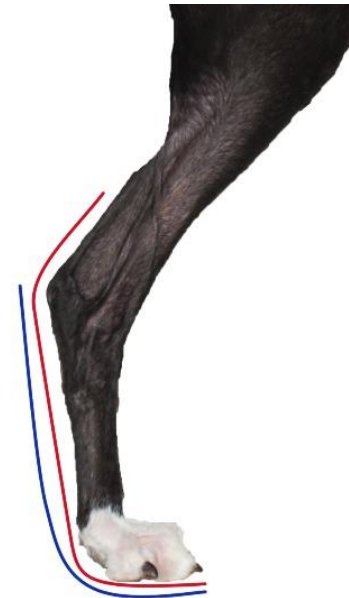
## How to Measure your pet for Walkin' Wheels Splints

### Front Splint



**A:** Measure from end of longest toenail to midpoint between carpal pad and elbow.  
**B:** Measure from end of longest toenail to just above carpal pad.

### Rear Splint



**A:** Measure from end of longest toenail to midpoint between hock and knee.  
**B:** Measure from the end of longest toenail to top of hock.





## Bootie Splints



Measure from the end of the longest toenail to just below the carpal pad.



Measure from the end of the longest toenail to just below the hock joint.

If you are unsure about how to measure, please call us (0800 072 3697) and we will be happy to help you.



### Carpal Splint



Measure from the top of paw, at the point on the back side of the leg, to the mid-point between carpal pad and elbow.

### Hock Splint



Measure from the top of your pet's paw. at the point on the back side of the leg, to the midpoint between hock and knee.

If you are unsure about how to measure, please call us (0800 072 3697) and we will be happy to help you.